

DIAMOND

Illustrated Parts List



Questions? Help is just a moment away!

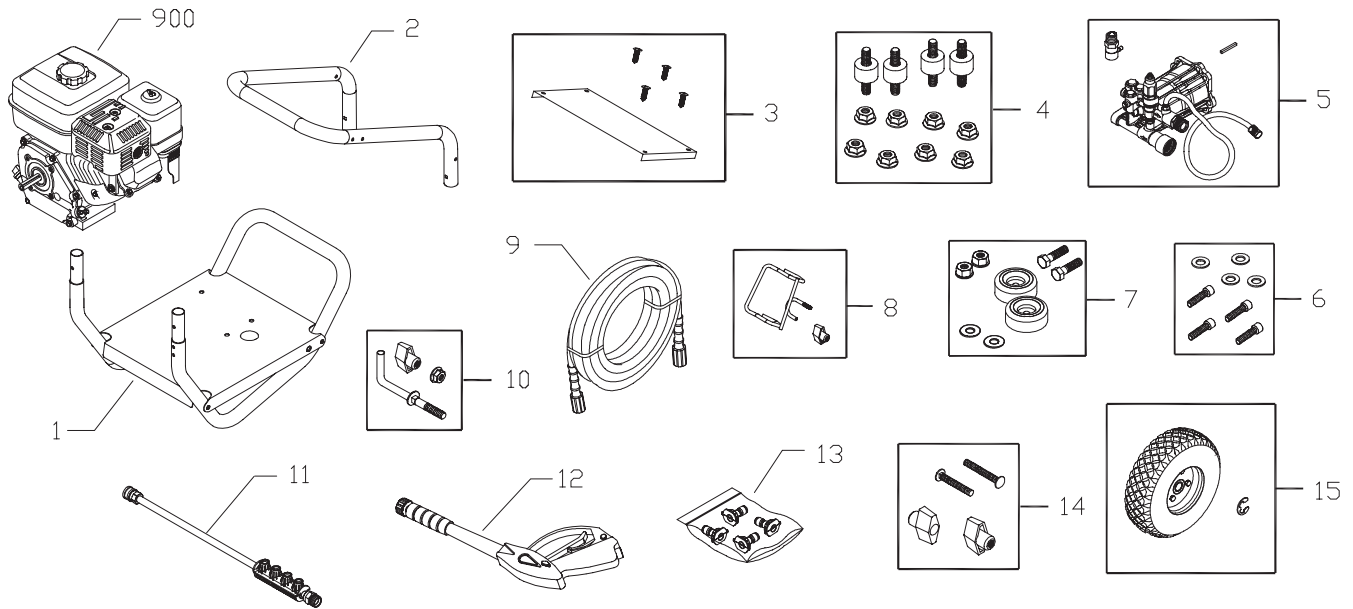
Call: **Pressure Washer Helpline**

1-800-743-4115 M-F 8-5 CT

BRIGGS & STRATTON POWER PRODUCTS GROUP, LLC
JEFFERSON, WISCONSIN, U.S.A.

Model No. 020307-01 (3100 PSI (213.7 BARS) Pressure Washer) Manual No. 203709A Revision - (04/24/2007)

Exploded View and Parts List — Main Unit



Item	Part #	Description
1	203048GS	ASSY, Base
2	K201499GS	HANDLE
3	203047GS	KIT, Billboard w/Decal & Clips
	195964GS	Clips, Tree
4	192134GS	KIT, Engine Mounting Hardware
5	203901GS	ASSY, Pump
	194298GS	Valve, Thermal Relief
	23139DGS	Key
6	192131GS	KIT, Pump Mounting Hardware
7	192553GS	KIT, Vibration Mount
8	201661GS	KIT, Gun Holder
9	203022GS	HOSE
10	194264GS	KIT, Hook
11	192198GS	EXTENSION, w/Nozzle Holder
12	199990GS	GUN
13	198690GS	KIT, Nozzle
	198841GS	Nozzle, QC, Plastic, Soap
	195983AAGS	Nozzle, QC, Red
	195983ABGS	Nozzle, QC, Yellow
	195983ADGS	Nozzle, QC, White
14	B2203GS	KIT, Handle Fastening
15	194509GS	KIT, Wheel
	191265GS	E-Ring
900	§	ENGINE

Items Not Illustrated:

203709GS	MANUAL, Operator's
87815GS	GOGGLES
BB3061BGS	OIL BOTTLE
191267SGS	AXLE
199571GS	DECAL, Honda Choke
200672GS	DECAL, Caution Hearing
195015GS	KIT, Tag/Warning Srv

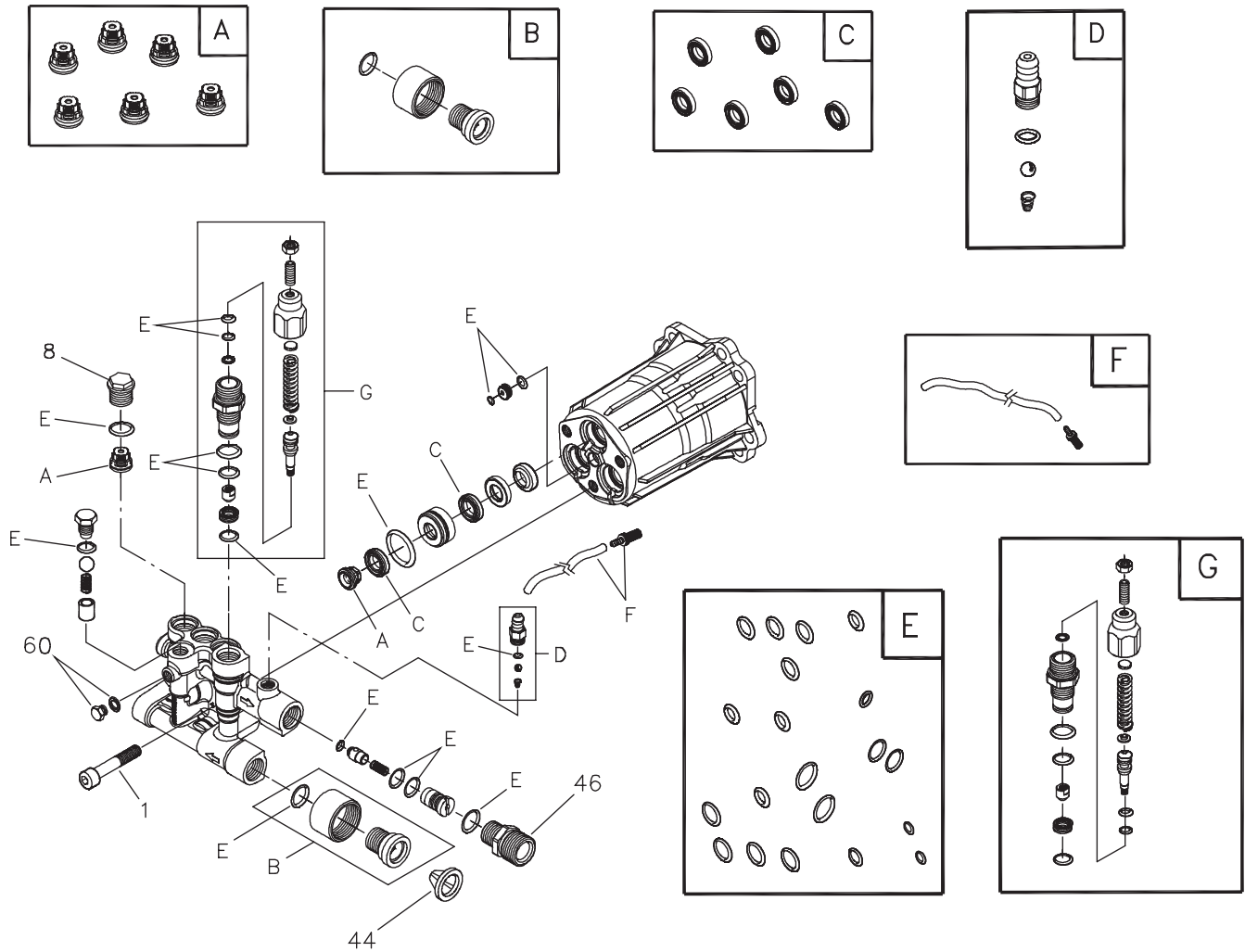
Optional Accessories

6048	KIT, O-Ring Maintenance
6039	PUMP SAVER

§ - Contact Engine Manufacturer

Copyright © 2007 Briggs & Stratton Power Products Group, LLC. All rights reserved. No part of this material may be reproduced or transmitted in any form by any means without the express written permission of Briggs & Stratton Power Products Group, LLC.

Exploded View and Parts List — Pump



Item	Part #	Description
1	204087GS	SCREW
8	201495GS	PLUG
44	B2384GS	FILTER, Inlet
46	204083GS	FITTING, Outlet
60	200350GS	KIT, GRUB SCREW & WASHER
A	204082GS	KIT, VALVES
B	204085GS	KIT, WATER INLET
C	204084GS	KIT, WATER SEALS
D	192914GS	KIT, HOSE TAIL
E	204086GS	KIT, O-RINGS
F	190592GS	KIT, INLET CHECK
G	200348GS	KIT, UNLOADER
F	189971GS	KIT, CHEMICAL HOSE

Parts Not Illustrated	
194298GS	THERMO RELIEF

Optional Accessories	
6039	PUMP SAVER
186452GS	FILTER, Inlet Bag of 10
6033	OIL BOTTLE, Pump

NOTE: Item letters A - F are service kits and include all parts shown within the box.